

Think of the atmosphere
Like a Bathtub
It's filling up fast.

What are the
Solutions?

Turn **OFF**
the Tap

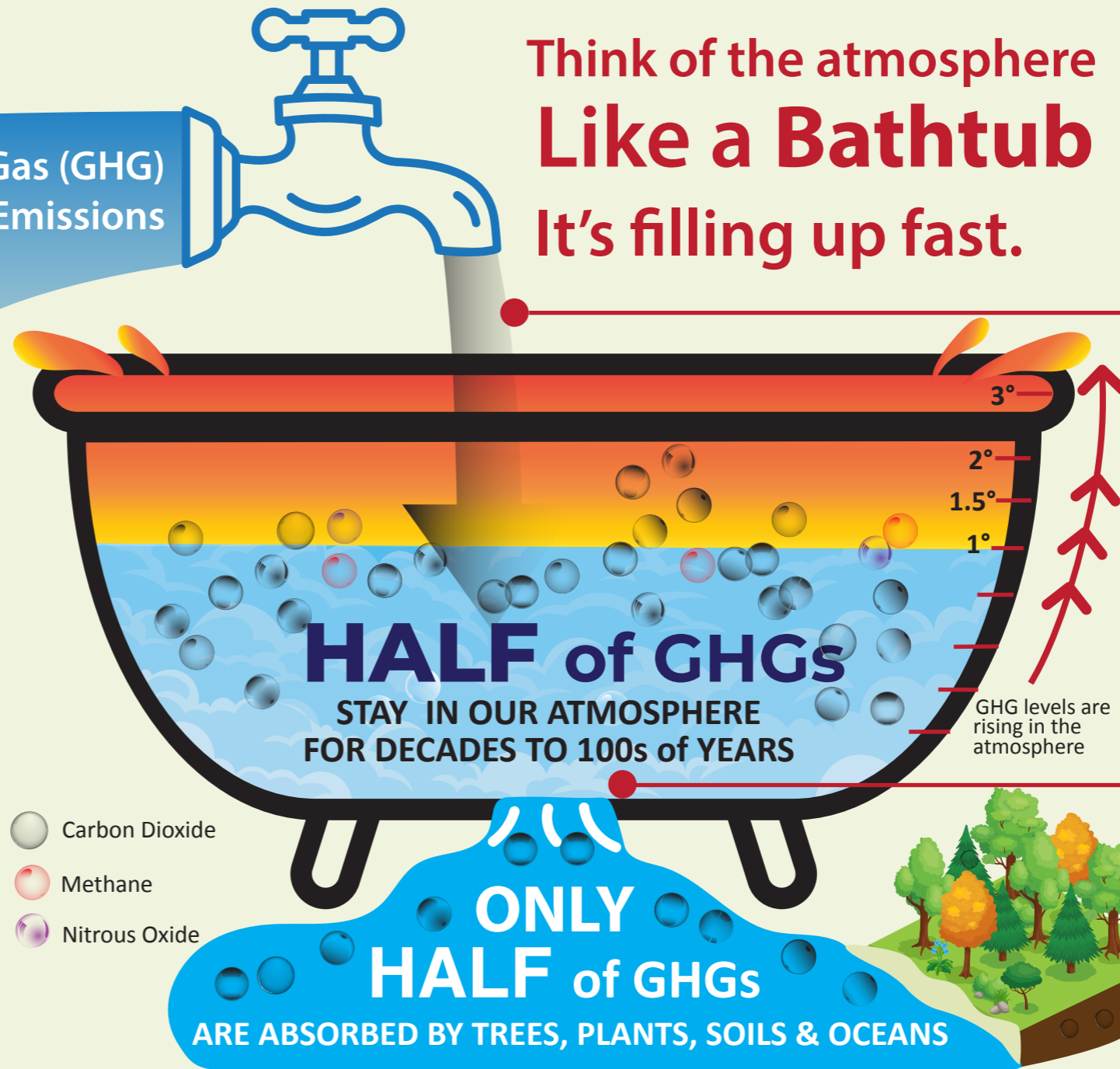


**Widen
the Drain**

Protect and grow
healthy forests



Greenhouse Gas (GHG)
Emissions



- Carbon Dioxide
- Methane
- Nitrous Oxide

AIR TRAVEL

WASTE
MANAGEMENT

INDUSTRY AND ENERGY
SUPPLY

AGRICULTURAL
PRACTICES

HOUSEHOLD
ENERGY

TRANSPORTATION

OIL AND GAS
PRODUCTION

3°

2°

1.5°

1°

GHG levels are
rising in the
atmosphere

HALF of GHGs
STAY IN OUR ATMOSPHERE
FOR DECADES TO 100s of YEARS

**ONLY
HALF of GHGs**
ARE ABSORBED BY TREES, PLANTS, SOILS & OCEANS